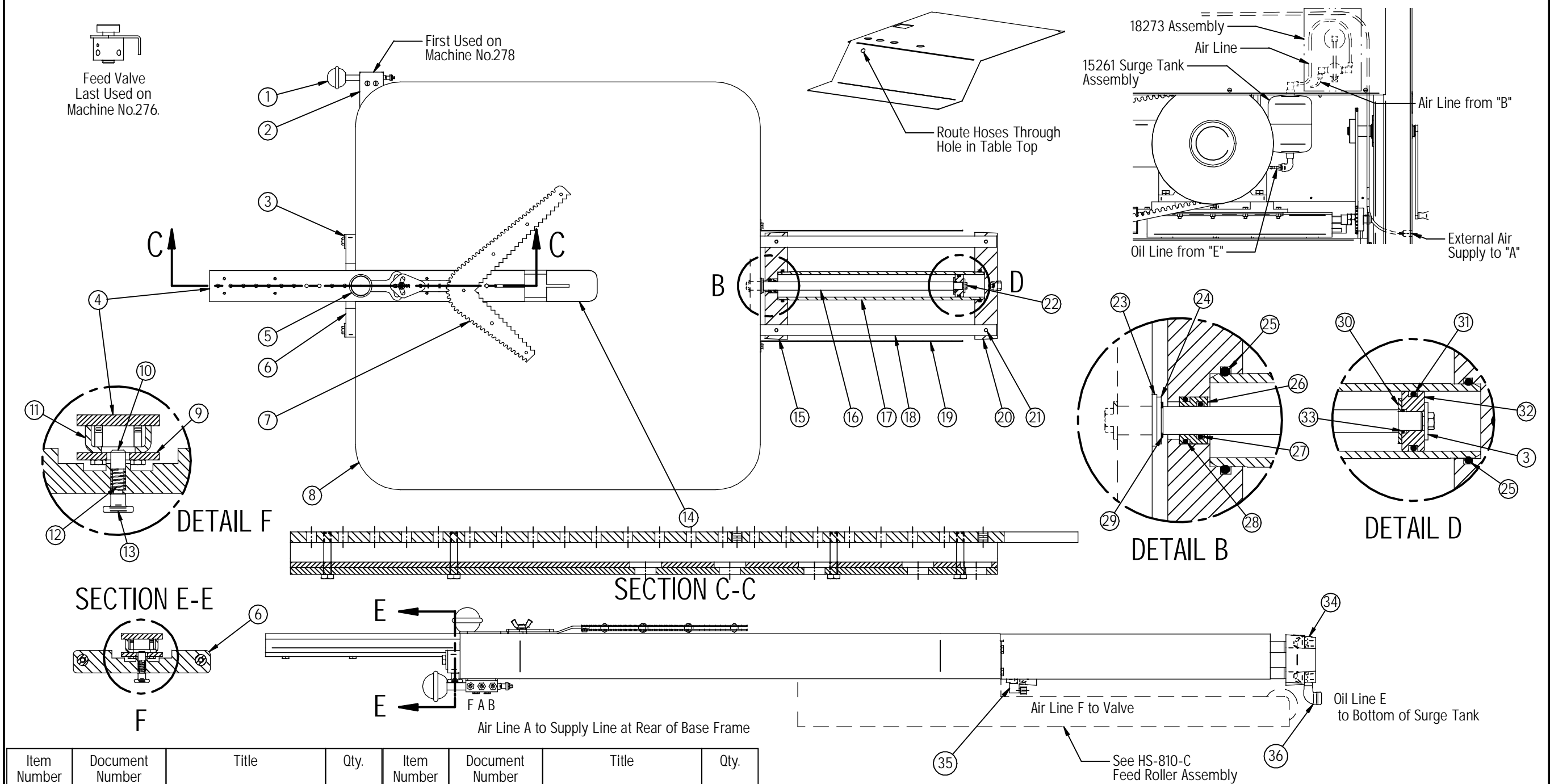


Item Number	Document Number	Title	Qty.	Item Number	Document Number	Title	Qty.	Item Number	Document Number	Title	Qty.	Item Number	Document Number	Title	Qty.
1	18150-B	Feed Valve Assy.	1	7	18215-B	Square Workholder	1	13	HS-377-A	Stroke Adjusting Pin Nut	1	19	HS-735-B	Feed Cylinder Guard	1
2	HS-977-A	Feed Valve Bracket	1	8	HS-950-D	Table	1	14	HS-440-A	Table Filler Plate	1	20	HS-728-C	End Cap - Feed Cylinder	1
3	15239-A	Feed Shaft Clamp	3	9	HS-259-B	Table Slide Clamp Plate	1	15	HS-727-C	End Cap - Feed Cyl.	1	21	15238-A	Feed Shaft Pin	4
4	15251-B	Slide Plate	1	10	HS-262-A	Stroke Adjustment Pin	1	16	HS-726-A	Piston Shaft	1	22	5/16-18 x 1/2	Hex Head Cap Screw	1
5	GS-2369-B	Workholder Assy.	1	11	HS-382-B	Feed Slide Spacer	1	17	HS-723-A	Cylinder	1	23	15258-A	1/8" Rubber Washer	1
6	HS-237-A	Feed Straddle Bar	1	12	HS-746-A	Stroke Adj Pin Spring	1	18	HS-725-A	Air/Hyd. Feed Shaft	2	24	15243-A	Washer	1



Item Number	Document Number	Title	Qty.	Item Number	Document Number	Title	Qty.
25	ARP568A-333	O-Ring	2	31	ARP568A-326	O-Ring	1
26	15453-A	Bushing	1	32	15109-A	Piston	1
27	ARP568A-210	O-Ring	1	33	ARP-568A-114	O-Ring	1
28	ARP568A-214	O-Ring	1	34	1/4-18 NPT	Pipe Plug	1
29	5100-75	External Retaining Ring	1	35	P-39	1/4 x 1/4 Hose Fitting	1
30	15454-A	Piston Shaft Washer	1	36	1/4 NPT	Street L	1

NO. REQ'D	PATT. NO.	MATERIAL	HEAT TREATMENT	DRN. KS	TR.	CH.	DATE 12-13-04	SCALE	O.K. Rev 3	DWG. NO. HS-745-C
-----------	-----------	----------	----------------	---------	-----	-----	---------------	-------	------------	-------------------

GROB INC. GRAFTON, WIS.

Air/Hydraulic Feed Assembly
for 6V-36 Band Saw

First Used on Machine No. 186.