



GROB 4V-36 Series Metal Cutting Band Saw

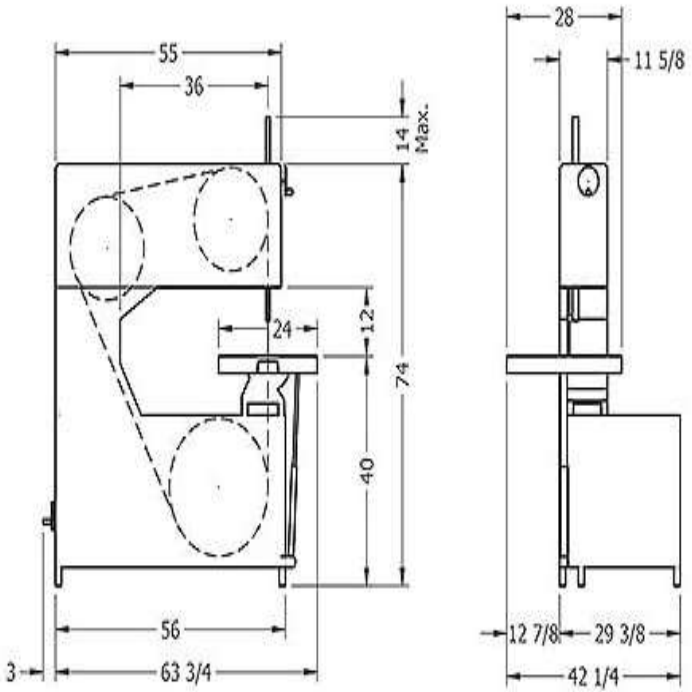


- Cold rolled gears and splines for superior strength.
- Heavy duty construction.
- 4 speed gear box.
- Air blower (shop air required).
- Work light.
- Speed Range of 40 - 5000 FPM
- Speed Indicator
- 3 HP 208/230/460 Volt 3 Phase, 60 Cycle motor
- Optional single phase or 575 Volt
- Frequency Drive with Dynamic Braking or Standard On/Off Button
- Ball bearing mounted balanced aluminum pulleys.
- Single door, dust proof electrical enclosure with disconnect switch.
- Door safety switches.
- One (1) pair 3/8" - 1/2" aluminum bronze saw guides and holders included
- 36" throat.
- Dimensions & weight for shipping – 80" x 90" x 48" 1890 LBS

4V-36 with 12" work height	\$ 23,975.00	<input type="checkbox"/>
Select Voltage	208V	<input type="checkbox"/>
	230V	<input type="checkbox"/>
	480V	<input type="checkbox"/>
Variable drive	Standard On/Off buttons	<input type="checkbox"/>
	Variable Drive	<input type="checkbox"/>

OPTIONAL EQUIPMENT

AIR HYDRAULIC FEED (REQUIRES AIR SUPPLY)	\$ 3,000.00	<input type="checkbox"/>
RIP FENCE	\$ 750.00	<input type="checkbox"/>
MITER GAGE (18248)	\$ 600.00	<input type="checkbox"/>
CIRCULAR CUTTING ATTACHMENT	\$ 1,450.00	<input type="checkbox"/>
RWA WELDER	\$ 3,550.00	<input type="checkbox"/>
RWA WELDER WITH GRINDER	\$ 3,950.00	<input type="checkbox"/>
MIST COOLANT (REQUIRES AIR SUPPLY)	\$ 975.00	<input type="checkbox"/>
EWB SAWS USE 4V-36 UNIT		



Vertical line on the left side of the page.