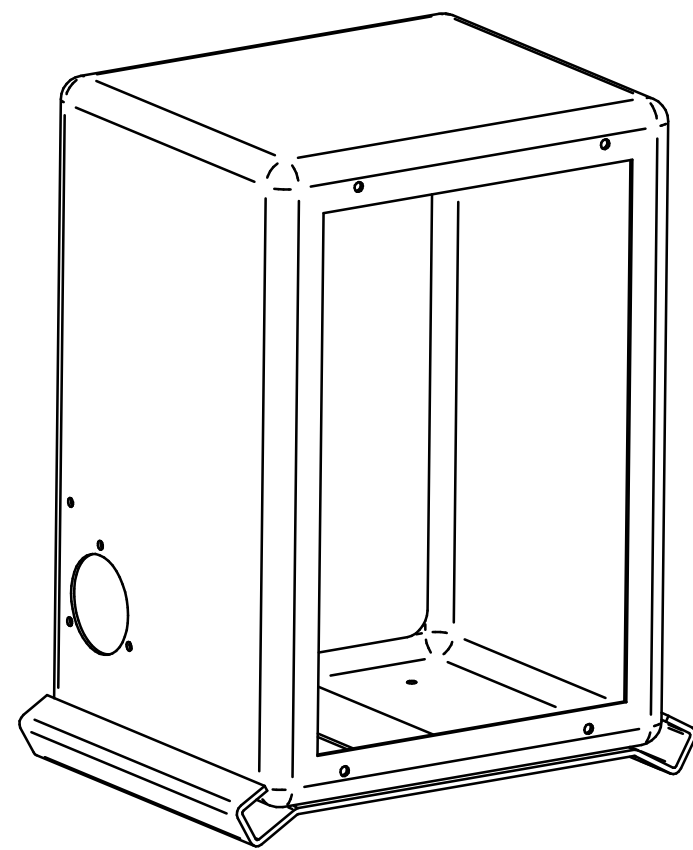
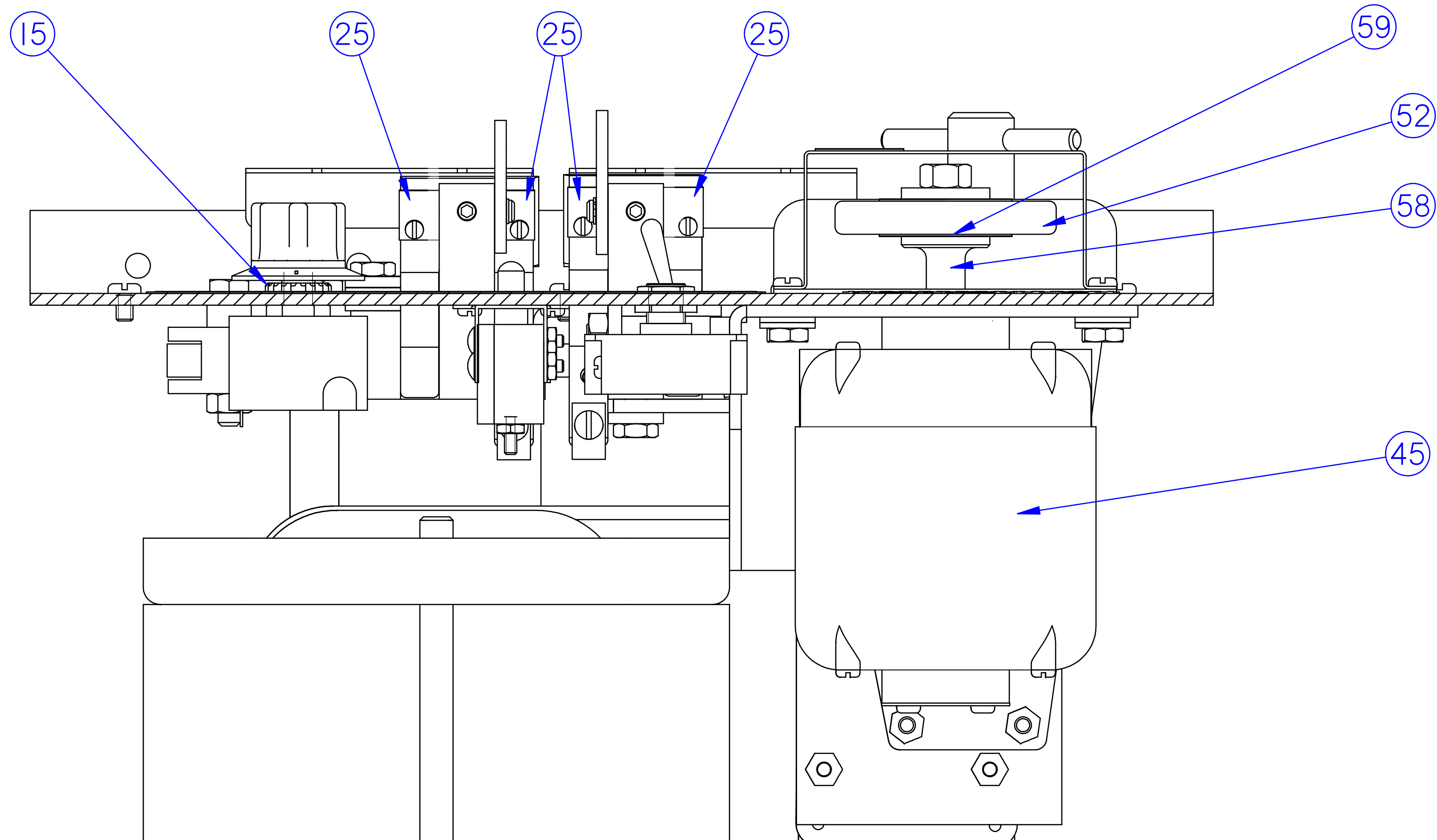
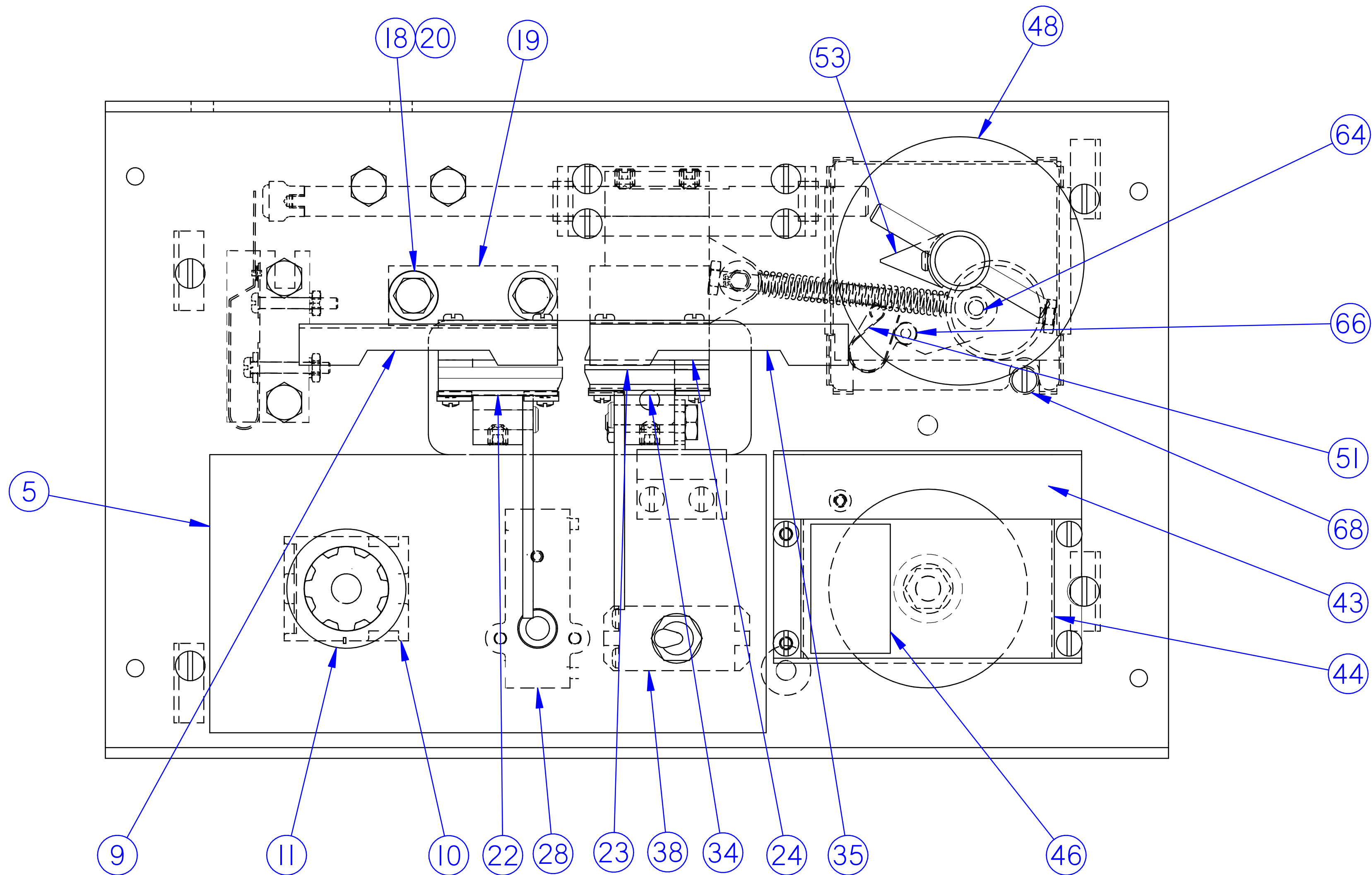
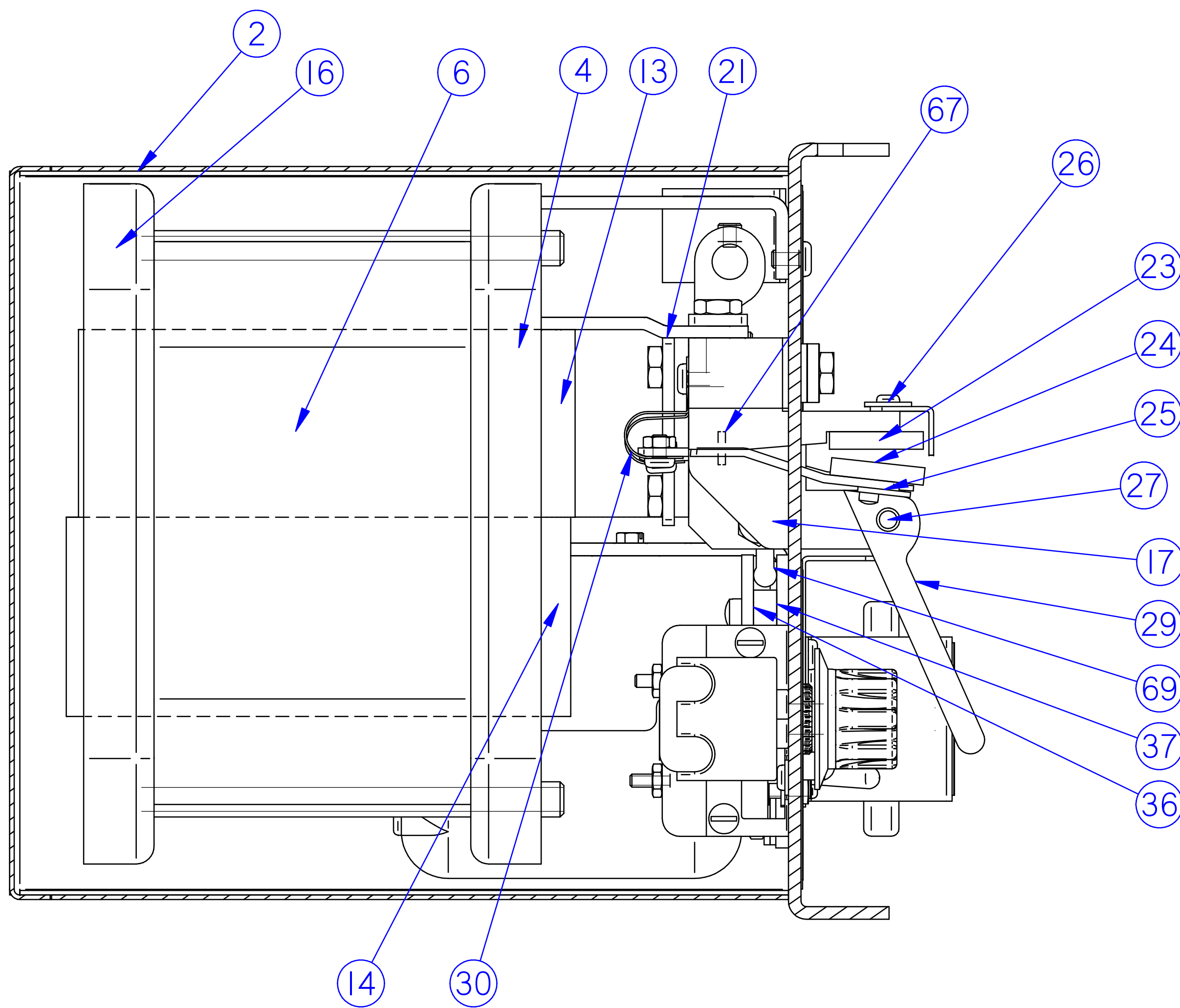
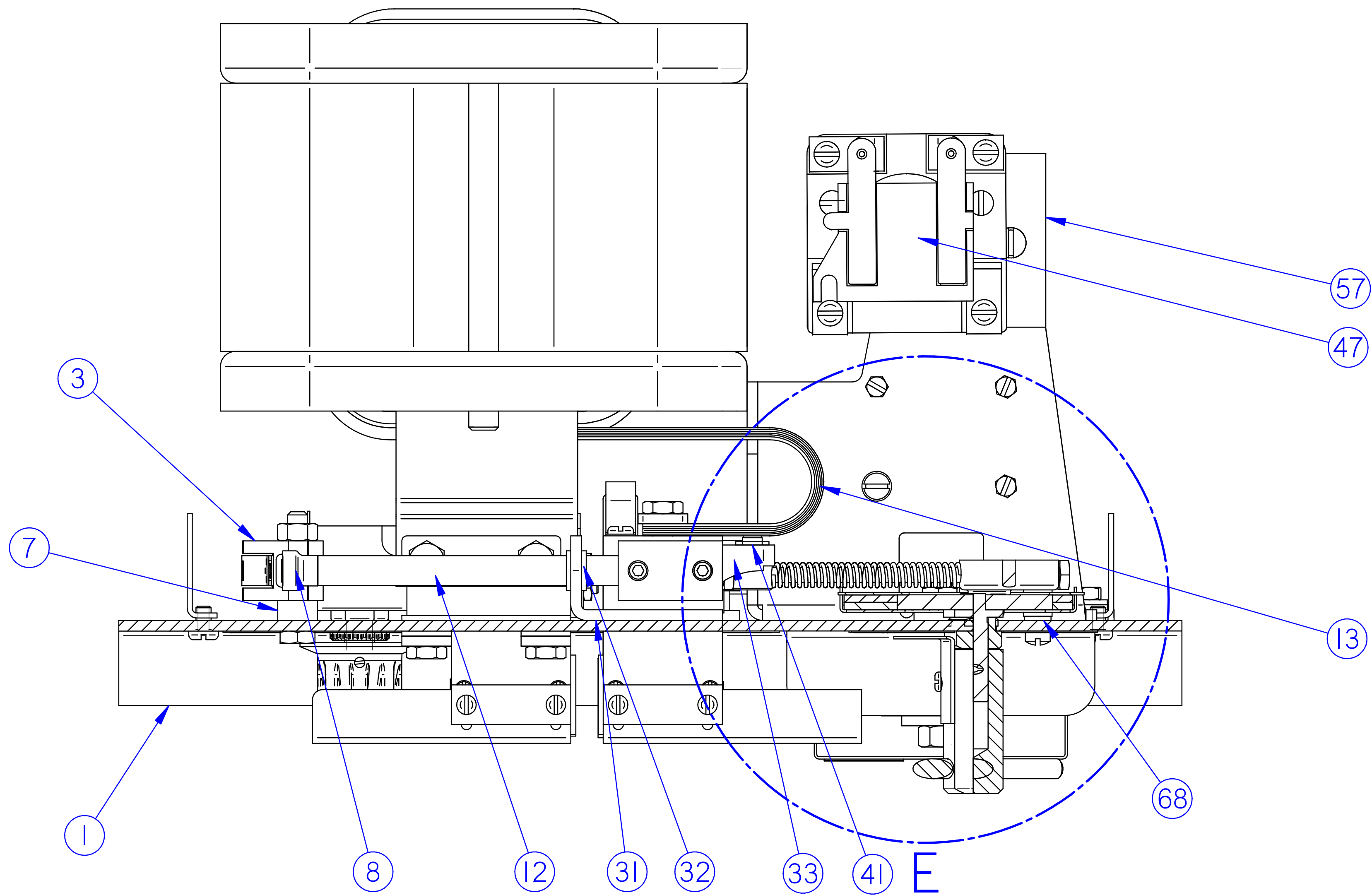


DETAIL E



BW-248-C Bench Model Box

Primary Coil List	
Drawing No.	Voltage
BW-98-A	110v.
BW-99-A	220v.
BW-300-A	220v./440v.
BW-137-A	460v.
BW-297-A	575v.

Item Number	Document Number	Title	Quantity
1	BW-247-C	Front Plate	1
2	BW-114-C	Butt Welder Box	1
3	BW-223-A	Limit Switch Assembly	1
4	BW-207-C	Transformer End Plate & Brkt. Ass.	1
5	BW-214-A	Nameplate	1
6	BW-118-A	Lamination	280
7	BW-246-A	Limit Switch Spacer	2
8	#1770 Knob	Lower Clamp Shaft Knob	1
9	BW-12C-A	Saw Band Gage	1
10	#243 Switch	Oak Heat Switch	1
11	1930-CI	Heat Switch Knob	1
12	BW-127-A	Lower Clamp Shaft	1
13	BW-64-I-C	Secondary Coil	1
14	Primary Coil	Primary Coil	1
15	BW-298-A	Heat Switch Clamp Nut	1
16	BW-206-C	End Plate	1
17	BW-211-B	Stationary Jaw	1
18	BW-52-A	Upper Clamp Bolt Insulator	2
19	BW-48-A	Upper Clamp Insulator	2
20	BW-198-A	1/4 x 5/8 Flat Washer	2
21	BW-18-A	Transformer Coil Clamp Plate	2
22	BW-232-Sta-A	Clamp Insert Holder, Stationary Jaw	1
23	BW-230-Upper-A	Clamp Jaw	2
24	BW-230-Lower-A	Clamp Jaw	2
25	BW-252-A	Clamp Lever Plate	4
26	BW-203-A	Band Saw Plate Gage Washer	2
27	BW-155R-A	Clamp Lever Pin	2
28	BW-295-A	Welding Switch Assembly	1
29	BW-154-AA	Clamp Lever	2
30	BW-228-A	Clamp Insert Holder Spring Clip	2
31	BW-28-A	Lower Clamp Shaft Bearing	1
32	BW-54-A	Clamp Shaft Bearing	2
33	BW-212-A	Movable Jaw	1
34	BW-232-Movable-A	Clamp Insert Holder, Movable Jaw	1
35	BW-120-A	Saw Band Gage	1
36	BW-10-A	Lower Clamp Guide Slide	2
37	BW-11-A	Lower Clamp Guide Block	1
38	7321 K3	7321 K3 Switch	1
39	BW-266-A	Clamp Adj. Disc Rod	1
40	BW-267-A	Clamp Adj. Disc Rod Pivot	1
41	5100-25	Retaining Ring	1
42	BW-53-A	Clamp Compression Spring	1
43	BW-172-A	Grind Wheel Guard (Outside)	1
44	BW-40-A	Grind Wheel Guard (Inside)	1
45	CUA6010B	Grinder Motor	1
46	BW-165-A	Grinding Instructions Decal	1
47	#700-HG47AI	Control Relay (SEE NOTE)	1
48	BW-215-A	Nameplate for Spring Tension	1
49	BW-255-A	Clamp Adj. Handwheel Plate Holder	1
50	BW-253-A	Clamp Adj. Handwheel Plate	2
51	BW-257-A	Clamp Adj. Handwheel Tension Spring	1
52	Grinding Wheel	2 1/2 x 3/8 x 5/16 Bore	1
53	BW-23-A	Clamp Adj. Handwheel Indicator	1
54	BW-250-A	Clamp Adj. Handwheel Pin	1
55	BW-258-A	Clamp Adj. Handwheel Disc	1
56	BW-254-A	Clamp Adj. Handwheel Plate Cover	1
57	BW-303-A	Relay Mounting Plate	1
58	BW-181-A	Grinding Wheel Spacer	1
59	BW-139-A	Grinding Wheel Flange	1
60	BW-249-A	Clamp Adj. Handwheel Stud	1
61	BW-22-A	Clamp Adj. Handwheel Pin Brg.	1
62	BW-20-A	Clamp Adj. Handwheel Pin	1
63	1/8 x 3/4 Spring Pin	Slotted Spring Pin	1
64	BW-269-A	Clamp Adj. Disc Nut	1
65	BW-268-A	Clamp Adj. Disc Rod Bushing	1
66	BW-263-A	Clamp Adj. Handwheel Pin	1
67	BW-234-A	Clamp Guide Pin	2
68	BW-264-A	Brake Latch Pin	1
69	BW-9-A	Lower Clamp Guide	1

NOTE: Allen Bradley No.
700-HG-47AI Use on All But 220 Volt Single Voltage Welders.
700-HG-47A2 Use on 220 Volt Welders.
Dual Voltage Models Use GBS-2 Curtis Terminal Block instead of 700-HG-47AI or 700-HG-47A2.

Carbon Steel Welders Only.

GROB INC.			GRAFTON, WIS.	
RWA-I Butt Welder Assembly				
DRN	KS	TR	CH	CHG. NO.
DATE	1-22-02	SCALE	1:1	G.K. Rev I
				BW-304-D